



Imaging the Molecular Dynamics of Dissociative Electron Attachment to Water

H. Adaniya,^{1,2} B. Rudek,^{2,3} T. Osipov,² D. J. Haxton,² T. Weber,² T. N. Rescigno,² C. W. McCurdy,^{2,4} and A. Belkacem²

¹Department of Applied Science, University of California, Davis, California 95616, USA

²Lawrence Berkeley National Laboratory, Chemical Sciences, Berkeley, California 94720, USA

³J. W. Goethe Universität, 60438 Frankfurt, Germany

⁴Departments of Applied Science and Chemistry, University of California, Davis, California 95616, USA

(Received 4 September 2009; published 30 November 2009)

Momentum imaging experiments on dissociative electron attachment (DEA) to a water molecule are combined with *ab initio* theoretical calculations of the angular dependence of the quantum mechanical amplitude for electron attachment to provide a detailed picture of the molecular dynamics of dissociation attachment via the two lowest energy Feshbach resonances. The combination of momentum imaging experiments and theory can reveal dissociation dynamics for which the axial recoil approximation breaks down and thus provides a powerful reaction microscope for DEA to polyatomics.

DOI: 10.1103/PhysRevLett.103.233201

PACS numbers: 34.80.Ht

Resonant collisions between low-energy electrons and molecules can provide an efficient pathway for channeling electronic energy into nuclear motion. In dissociative electron attachment (DEA), the transient negative ions so formed fragment to form neutral plus ionic fragments. The resurgence of interest in this process in recent years has been due in large part to the key role it plays in radiation damage in a number of different contexts and to the discovery that low-energy DEA can be responsible for double-strand breaks in DNA [1]. It is therefore not surprising that dissociative electron attachment to water has been the target of much recent experimental and theoretical work, since water is the principal constituent of living tissue and DEA can produce free radicals that affect that tissue. The application of modern imaging techniques, such as velocity slice imaging [2], can bring a new level of sophistication to the study of the angular dependence of fragment ions produced in DEA.

Dissociative electronic attachment to the deceptively simple water molecule involves complex electronic and nuclear dynamics. In the gas phase, it proceeds via three transient anion states of 2B_1 , 2A_1 , and 2B_2 symmetries which are responsible for three distinct broad peaks in the DEA cross section at electron energies of 6.5, 9, and 12 eV [3], while in the condensed phase, there is evidence that deep-valence states may be responsible for a broad DEA peak centered at 25 eV [4]. The negative ion states subsequently fragment to produce the anions H^- , O^- , and possibly OH^- , in various two-body as well as three-body breakup channels [5–9]. In this Letter we present momentum imaging measurements of the angular distribution of the ionic fragments relative to the direction of the incident electron that allow us to probe those dynamics. However, since the measurements are necessarily made in the laboratory frame, these observations can yield detailed information about the nuclear dynamics following electron attachment only if a reliable connection between the lab

frame and molecular frame can be made. The key to that connection is a knowledge of the angular dependence of the electron attachment probability in the molecular frame, and that attachment probability can be calculated by *ab initio* methods [9–12]. The attachment probability can be directly related to the laboratory-frame distribution when the axial recoil condition is met, requiring in the present context that the recoil axis which connects the atom and the diatom center of mass does not rotate during the dissociation. We demonstrate here that this combination of momentum imaging experiments and theory can also reveal dissociation dynamics for which the axial recoil approximation breaks down and thus provides a powerful reaction microscope for DEA to polyatomics.

In our experiments, ions resulting from DEA are extracted by means of a COLTRIMS-like spectrometer [13]. The time-of-flight and detector positions of the ions allow for reconstruction of their three-dimensional momentum vectors. The electron-scattering calculations that provide the connection between lab and molecular frames employ the well-established complex Kohn variational method [10], and are augmented by classical trajectory calculations performed on previously constructed potential energy surfaces [11] to allow comparison with experiment.

To understand the relation of lab- to body-frame dynamics it is useful to examine the classical formula [14] that describes the angular distribution $I(\theta_L, \phi_L)$ of two fragments in the lab frame following electron attachment in which the electron is incident along the z axis or following photoabsorption with polarization along that axis,

$$I(\theta_L, \phi_L) = \int d\Omega P(\alpha, \beta, \gamma) f(\theta_m, \phi_m), \quad (1)$$

where $P(\alpha, \beta, \gamma)$ is the probability of a molecule's attaching an electron or absorbing a photon in the orientation specified by the Euler angles α, β, γ connecting the molecular and lab frames, and $f(\theta_m, \phi_m)$ is the distribution

of the two fragments in the molecular frame after dissociation. The integration $d\Omega$ is over the Euler angles. Equation (1) is the textbook expression [14] used to describe the angular dependence of photodissociation. The key difference between the two processes is that in the case of photodissociation $P(\alpha, \beta, \gamma)$ is proportional to $\cos^2\beta$ (the square of a dipole amplitude), and the integration over molecular orientations (equivalent to treating rotation classically) gives only the familiar formula $I \propto 1 + \beta(E)P_2(\cos\theta_L)$, where P_2 is a Legendre polynomial and $\beta(E)$ is the asymmetry parameter.

In DEA the role of the dipole amplitude is played instead by the square of a quantity called the entrance amplitude [15], $V_{\vec{a}}(\theta, \phi)$, which depends on two angles instead of one as in photodissociation. This function corresponds to the matrix element between a discrete resonance state and a background scattering wave function for an electron incident on the initial target state,

$$V_{\vec{a}}(\theta, \phi; \vec{R}) = \langle \Psi_{\text{bg}}^+(\theta, \phi; \vec{R}) | H_{\text{el}} | \Psi^{\text{res}}(\vec{R}) \rangle. \quad (2)$$

Here $\Psi_{\text{bg}}^+(\theta, \phi)$ is the background function with a plane wave incident on the target in direction θ, ϕ , Ψ^{res} is a discrete-state approximation to the resonance wave function, and H_{el} is the electronic part of the Hamiltonian. The entrance amplitude can also be understood in terms of the residue of the fixed-nuclei S matrix at the complex resonance energy [10,11].

Figure 1 shows the calculated entrance probabilities for the $(1b_1^{-1}4a_1^2)$ 2B_1 , $(3a_1^{-1}4a_1^2)$ 2A_1 , and $(1b_2^{-1}4a_1^2)$ 2B_2 resonances. The entrance amplitude reflects the underlying shape of the $1b_1$, $1a_1$, and $1b_2$ orbitals of neutral water, from which one electron is excited into the $4a_1$ orbital to form the 2B_1 , 2A_1 , and 2B_2 , Feshbach resonance configurations, respectively [3]. For the 2B_1 resonance the electron is more likely to attach when the electron impinges on the molecule off the plane formed by the oxygen and the two hydrogen atoms. For the 2A_1 resonance the electron is more likely to attach along the main axis of symmetry of the molecule, while for the 2B_2 resonance the electron is more likely to attach when impinging along either O-H bond. The more complicated dependence of the attachment dependence on the angle of incidence of the electron provides

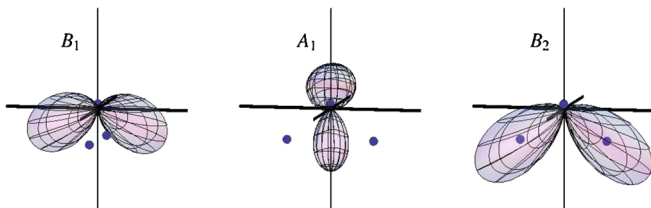


FIG. 1 (color online). Electron attachment probability calculated at the equilibrium geometry of the neutral water molecule for the three resonances as a function of polar angles about the center of mass. Dots denote positions of nuclei.

a stronger connection between the molecular and laboratory frames than in photodissociation that yields a more complicated angular dependence of the fragments in general and thus more information on the molecular dynamics of dissociation in DEA than is available in photodissociation. We focus here on the 2B_1 and 2A_1 resonances, deferring analysis of the 2B_2 resonance to a later paper.

We study interactions between water molecules and electrons by colliding a magnetically collimated and pulsed electron beam at 90° with a beam of water molecules from an effusive source. In a COLTRIMS-like spectrometer [13] we measured the ions' time-of-flight and position at the detector following fragmentation to reconstruct their momentum vectors in 3D. Details of the setup will be presented in a separate publication. In brief, it consists of a pulsed electron gun, a series of electrodes for ion extraction and transport, a time and position sensitive detector and an effusive gas jet system. These components are housed inside a vacuum chamber that is kept at 10^{-8} Torr. The electron beam is collimated by a magnetic field of ≈ 25 G, created by a pair of 75-cm diameter Helmholtz coils set outside the vacuum chamber. The coils, powered by a voltage stabilized 10 V/20 A power supply, are air cooled to prevent heating and subsequent changes in the Ohmic resistance and magnetic field. A pulsed electron beam with 80 ns pulse width at 50 kHz repetition rate is generated by a Kimball Physics ELG-2A electron gun. The energy resolution of the electron beam is ± 0.4 eV. A surgical needle of 0.5 mm internal diameter is used to produce an effusive jet of target water molecules. The needle and water vapor inlet tube inside the vacuum chamber are heated to prevent condensation and clustering. When water is used as a target, the chamber pressure is $\approx 10^{-7}$ Torr with the gas water inlet closed due mainly to outgassing of water that condenses on the inner walls. With the water gas inlet open the pressure rises to 5×10^{-6} Torr. DEA takes place between a pusher plate and a permanently grounded plate with a 1-inch diameter grid. The pusher plate voltage is turned on ≈ 50 ns after the electron beam pulse passes the interaction region and is kept on for about $10 \mu\text{s}$. The field duration and its delay with respect to the pulsed electron beam are set to optimize the quality of the electronic signal. The grounded plate with grid is part of a large cylindrical enclosure that covers the rest of the parallel plate spectrometer together with a RoentDek 2D delay line detector. It minimizes the chances of stray electrons hitting the detector and also shields the detectors from the electronic noise associated with the pulsed pusher field. Negative ions are extracted by a pusher field of 25 V/cm into the shielded part of the spectrometer. Ions are accelerated by a uniform electric field and focused by an electrostatic lens, created by a series of copper plates, to minimize the effect of the reaction position defined by the effusive target and expansion of the anion momentum sphere prior to extraction. This setup allows for 4π solid

angle detection of ions with energies between 0 and 10 eV. Reconstructed 3D momentum vectors provide information about the kinetic energy release (KER) and the angular distribution of the negative fragments with respect to the incidence angle of the electron beam. The KER resolution is 0.05 eV and the angular resolution is 5° .

2B_1 resonance.—Dissociation through the $H^- + OH$ channel is well known to be dominant for this resonance and our results for this channel are in accord with prior results [5–8,16]. We find that the angular distribution of H^- with respect to the incident electron peaks at about 100° , in agreement with prior results [6]. This channel is accurately described by assuming the axial recoil approximation, as we have found previously [10].

The conclusions drawn from our current measurements on DEA through 2B_1 differ from earlier studies with respect to the minor $O^- + H_2$ channel. Previous experiments [5,8] have reported O^- from 2B_1 with a peak intensity approximately one fortieth that of H^- . However, calculations on this system carried out in full dimensionality [12] failed to reproduce this result, instead predicting O^-/H^- ratios of ~ 0.001 . We have taken care to separate the O^- signals that come from dissociative attachment to water from other background sources. We conclude that most of the O^- observed and reported in the literature comes from electron attachment to the residual O_2 background in the vacuum chamber despite the fact that the vacuum is held at 10^{-7} Torr. The O^- signal that results following subtraction of the background is about 3 orders of magnitude smaller than H^- production. A more detailed discussion of this important observation will be presented in a future publication.

2A_1 resonance.—In agreement with prior results [5–8], H^- production from the 2A_1 resonance is found to be approximately an order of magnitude larger than O^- production. Our results on H^- are shown in Fig. 2. The H^-

kinetic energy distributions, shown in the bottom-left panel, shift to higher energy with increasing electron energy, but, unlike the case with the 2B_1 resonance, the width of the distributions do not change with energy, i.e., most of the increased electronic energy is converted into translational energy of the fragments with little change of the vibrational and rotational energies of the OH fragment. An interesting feature is that the kinetic energy release exhibits a marked shoulder on the left side of the distribution. The portion of the distribution to the left of the shoulder contributes $\sim 15\%$ of the total distribution independent of incident energy. On energetic grounds, we can rule out any contribution arising from production of electronically excited OH ($^2\Sigma$) or from three-body breakup, which means that the low kinetic energy peak corresponds to an OH fragment left in its ground electronic state with high rovibrational energy.

The angular distributions of the H^- fragment, shown in the bottom-middle and bottom-right panels of Fig. 2 for low and high KER, are far less peaked than they are in the case of the 2B_1 resonance. Those at low and high KER are different. The angular dependence itself depends upon the final state of the OH fragment. Therefore, the axial recoil approximation fails for DEA to the 2A_1 state.

To understand these experimental results, we carried out classical trajectory calculations using the previously constructed [11] potential energy surface for the $1^2A'$ state. We find that the HOH bond angle opens up quickly following attachment, confirming that the condition of axial recoil is broken. Furthermore, the degree of opening is greatest when the molecule dissociates symmetrically along both OH bonds. At the equilibrium geometry of the neutral, the hydrogen recoil axis is at approximately 128° (0° corresponding to oxygen atom recoil), but undergoes bending motion that reorients it towards and beyond linear geometry at 90° . Trajectories in which 1 H takes more of the available kinetic energy are found to undergo less bending motion before dissociation.

In Fig. 2 we compare the experimental results with numerical predictions at two different levels of theory. At the simplest level (dashed lines in Fig. 2), we use the attachment probability along with the axial recoil assumption to produce an angular distribution prediction that is independent of KER and that does not account for the dissociation dynamics. We also show results (solid lines) of a more elaborate treatment in which we convolve the attachment probability predictions with the recoil angle distributions for different KERs obtained from the classical trajectory calculations. This treatment also includes the variation of the attachment probability with geometry and clearly gives a good match with the experimental results. These calculations indicate that the observed angular distribution is a product of multiple dynamic effects, including the variation of entrance amplitude with nuclear geometry and the correlation between the

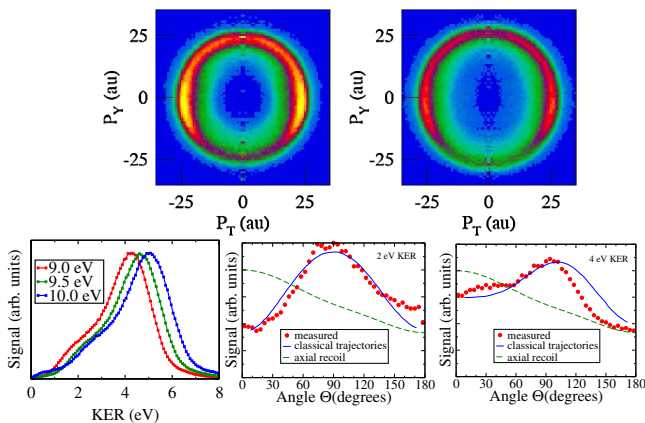


FIG. 2 (color online). Top: Scatter plots for H^- production from 2A_1 resonance for 9.0 and 10 eV electrons. Bottom: experimental angular integrated KER distributions (left); comparison of measured and calculated angular distributions for 9.5 eV electrons at KER of 2 eV (middle) and 4 eV (right).

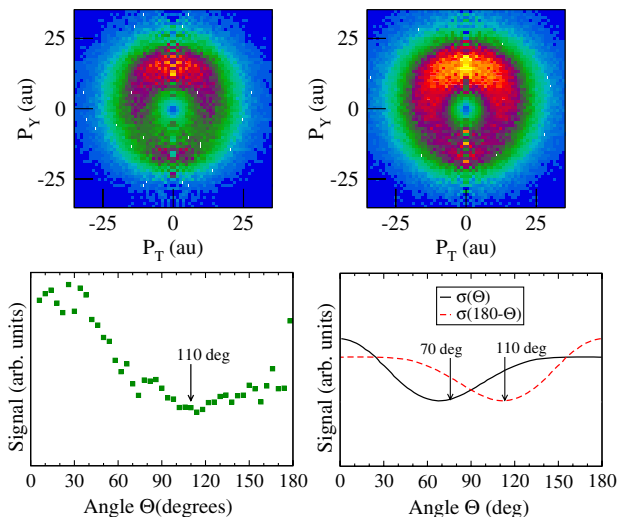


FIG. 3 (color online). Top: Scatter plots for O^- production from 2A_1 resonance at 9.5 (left) and 10 eV (right). Bottom: measured angular distributions at 9.5 eV electron energy (left) for all KER between 0.1 and 0.2 eV, compared with theoretical predictions (right), the latter plotted as functions of Θ and $180 - \Theta$ (see text).

geometry at attachment and the angle and kinetic energy of H^- recoil.

O^- production through the 2A_1 state appears to proceed predominantly through a three-body breakup, $H + H + O^-$, as we recently predicted [9]. This breakup channel was previously observed for D_2O [17]. Figure 3 shows the measured angular distributions of O^- along with the theoretical prediction assuming axial recoil and the attachment probability shown in Fig. 1. The momentum spheres (longitudinal versus transverse momentum) shown in the top panels in Fig. 3 all exhibit an intense and broad O^- distribution in the forward direction and a less intense and narrow distribution in the backward direction for three electron energies across the 2A_1 resonance. The bottom panels of the figure show the measured and predicted angular distributions for 9.5 eV electron energy. It is clear that the measured distribution and the theoretical prediction appear to be mirror images of each other, the measured angular distribution showing a broad minimum about 110° while the theoretical minimum assuming axial recoil is located at $180^\circ - 110^\circ = 70^\circ$. The contrast between the measured distribution and the axial recoil prediction suggests that after attachment, the molecule scissors backwards and ejects the oxygen through the mouth of the H-O-H bond, regardless of the direction of the incident electron, while the hydrogens recoil in the opposite direction. This interpretation of the dissociation dynamics, which is also supported by classical trajectory calculations,

explains why O^- production through the 2A_1 state is most likely to proceed through three-body breakup and why the associated angular distribution is the inverse of the axial recoil prediction.

We have shown that a calculation of the attachment probability, which ties the molecular- to the laboratory frame, and a COLTRIMS-like experimental momentum imaging technique can be combined to create a unique reaction microscope that provides insight into the dynamics involved in dissociative electron attachment. The power of the method was illustrated by application of this reaction microscope to the case of DEA in water where there was existing extensive *ab initio* theoretical work. The power of this new approach can now be directly applied to more complex molecules where the entrance amplitude can be calculated reasonably accurately.

This work was performed under the auspices of the U.S. Department of Energy and was supported by the DOE OBES, Division of Chemical Science.

- [1] B. Boudaïffa, P. Cloutier, D. Hunting, M. A. Huels, and L. Sanche, *Science* **287**, 1658 (2000).
- [2] D. Nandi, V. S. Prabhudesai, E. Krishnakumar, and A. Chatterjee, *Rev. Sci. Instrum.* **76**, 053107 (2005).
- [3] M. Jungen, J. Vogt, and V. Staemmler, *Chem. Phys.* **37**, 49 (1979).
- [4] G. A. Kimmel and T. M. Orlando, *Phys. Rev. Lett.* **77**, 3983 (1996).
- [5] J. Fedor, P. Cicman, B. Coupier, S. Feil, M. Winkler, K. Gluch, J. Husarik, D. Jaksch, B. Farizon, N. J. Mason, P. Scheier, and T. D. Märk, *J. Phys. B* **39**, 3935 (2006).
- [6] D. S. Belic, M. Landau, and R. H. Hall, *J. Phys. B* **14**, 175 (1981).
- [7] R. N. Compton and L. G. Christophorou, *Phys. Rev.* **154**, 110 (1967).
- [8] C. E. Melton, *J. Chem. Phys.* **57**, 4218 (1972).
- [9] D. J. Haxton, T. N. Rescigno, and C. W. McCurdy, *Phys. Rev. A* **78**, 040702(R) (2008).
- [10] D. J. Haxton, C. W. McCurdy, and T. N. Rescigno, *Phys. Rev. A* **73**, 062724 (2006).
- [11] D. J. Haxton, C. W. McCurdy, and T. N. Rescigno, *Phys. Rev. A* **75**, 012710 (2007).
- [12] D. J. Haxton, T. N. Rescigno, and C. W. McCurdy, *Phys. Rev. A* **75**, 012711 (2007).
- [13] R. Dörner *et al.*, *Phys. Rep.* **330**, 95 (2000).
- [14] R. N. Zare, *Angular Momentum: Understanding Spatial Aspects in Chemistry and Physics* (John Wiley & Sons, New York, 1988).
- [15] T. F. O'Malley, *Phys. Rev.* **150**, 14 (1966).
- [16] N. B. Ram, V. S. Prabhudesai, G. Aravind, P. Rawat, and E. Krishnakumar, *J. Phys. Conf. Ser.* **80**, 012017 (2007).
- [17] M. G. Curtis and I. C. Walker, *J. Chem. Soc., Faraday Trans.* **88**, 2805 (1992).