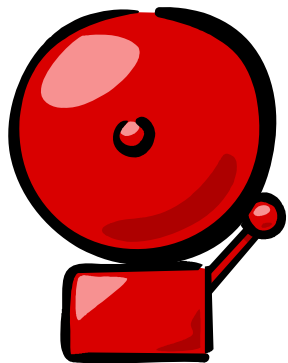
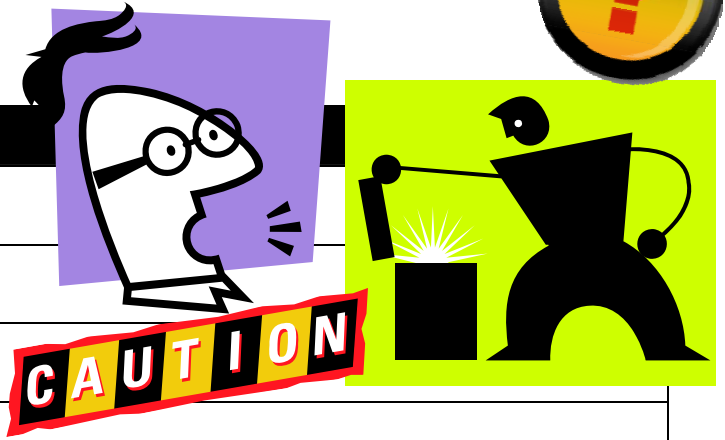


# In case NON-ROUTINE or UNEXPECTED WORK would involve the following:



## Possible hazards

- voltages higher than 50V
- overpressure of 20psi or more
- radioactivity or biohazards
- liquid nitrogen or liquid helium
- lead (bricks), indium, mercury, acids, toxic gases and liquids...
- flammables, open flames, torches or hot surfaces...
- disabling interlocks, shielding, protection guards...
- UV lamps or laser light
- mechanical (motorized) parts under stress, heavy and sharp objects in motion...
- glassware, fragile objects, things that can shatter or burst...



**DO NOT START THE WORK  
EVEN IF YOU THINK YOU HAVE THE  
APPROPRIATE TRAINING !**

**THINK TWICE – CHECK YOUR JOB HAZARDS – ASK YOUR  
SUPERVISOR AND COWORKERS FOR ADVICE...**